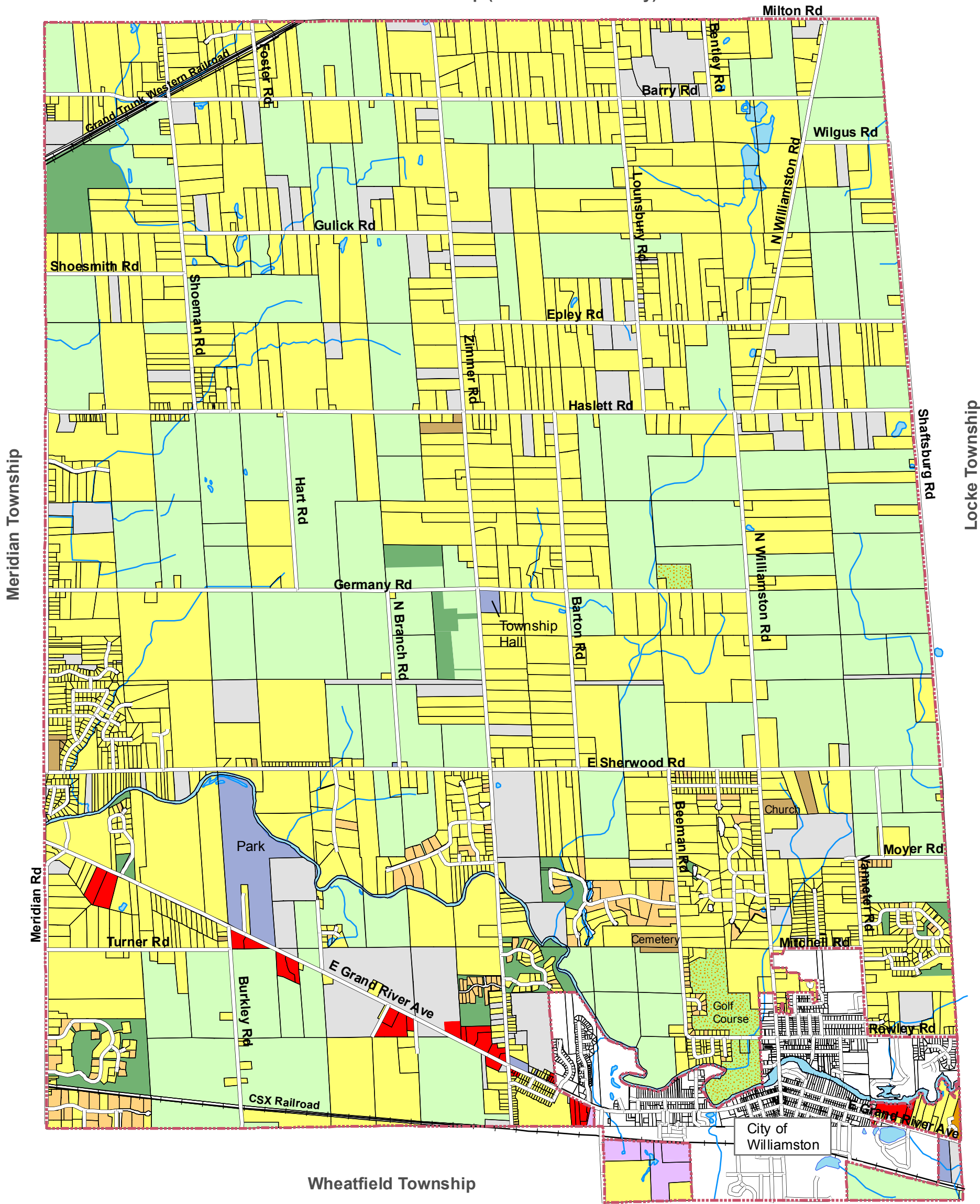


Woodhull Township (Shiawassee County)



Print date: 11/22/2006 E:\Projects\Ingham\willtown\ Existing\_Land\_Use.mxd

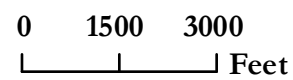
Existing Land Use

11/14/2006

Williamstown Township,  
Ingham County, Michigan

- Agricultural
- Residential
- Subdivision Vacant
- Manufactured Home Park
- Residential Open Space
- Commercial and Office
- Church or Cemetery
- Public
- Semi Public
- Industrial
- Open Lands

Parcel Data Source: Ingham County, 2004  
Data Source: Williamstown Tax Assessor, 2004



**McKenna**  
CONSULTANTS  
INCORPORATED

